



# 五大亮点 登峰造G

ZE 215G

22

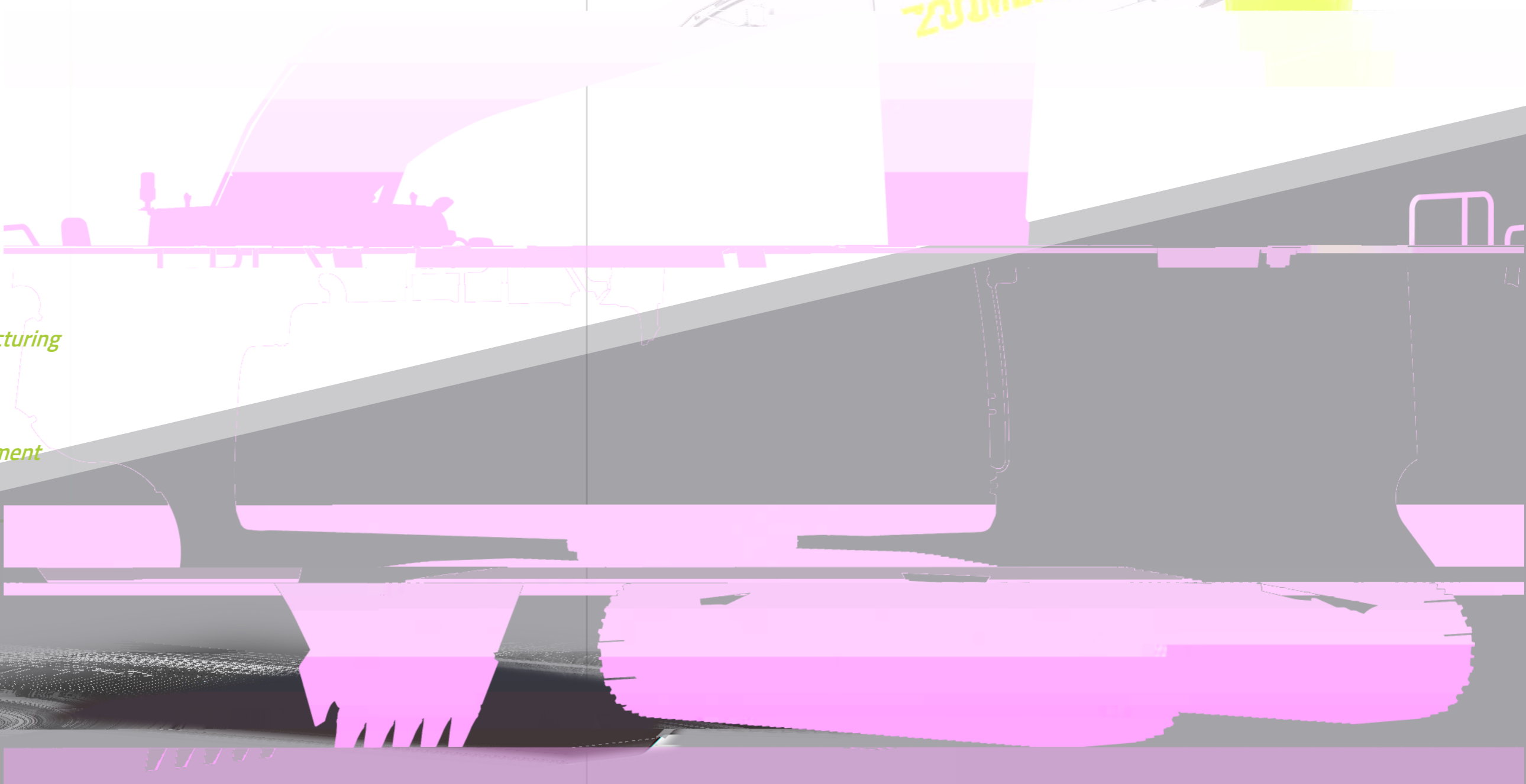
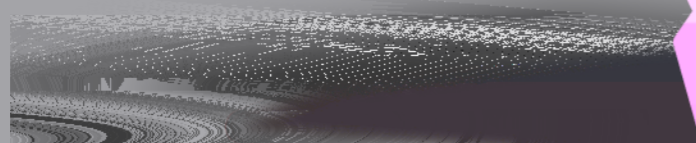
*High Power*

*Large Machine Body*

*Excellent Capability*

*Superb Smart Manufacturing*

*High Return on Investment*

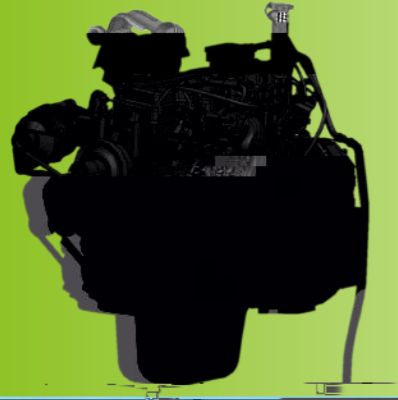


# High Power

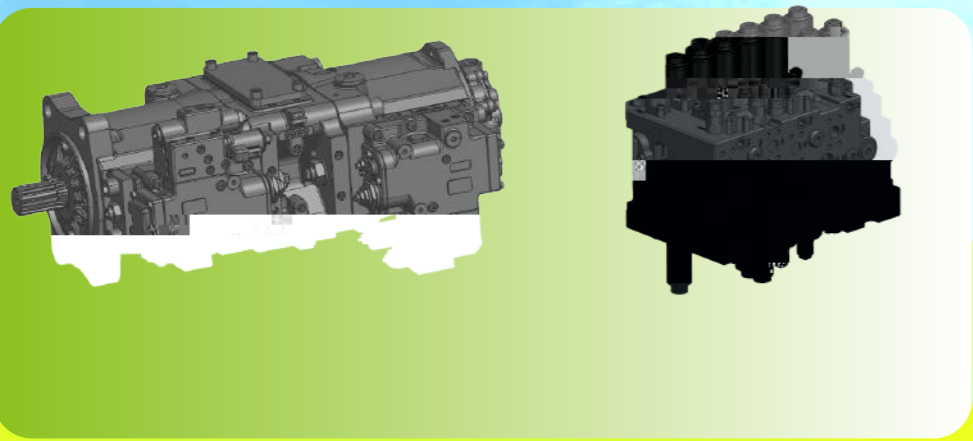
6

+

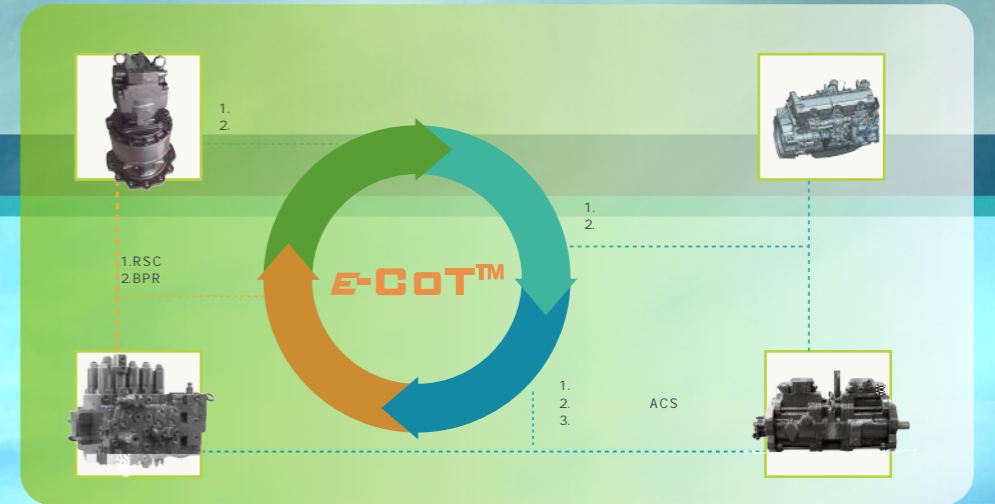
## Cummins



B7



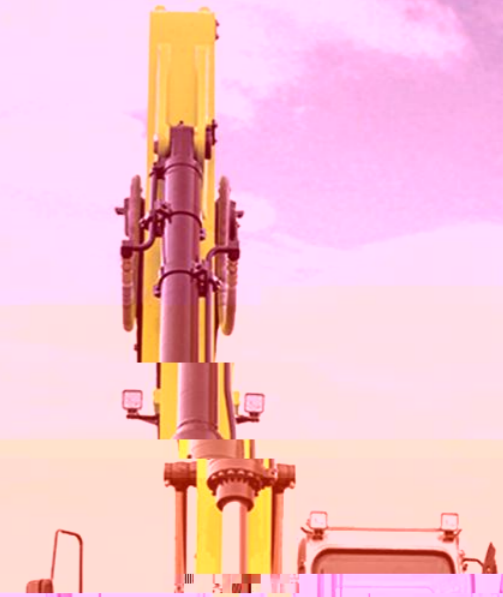
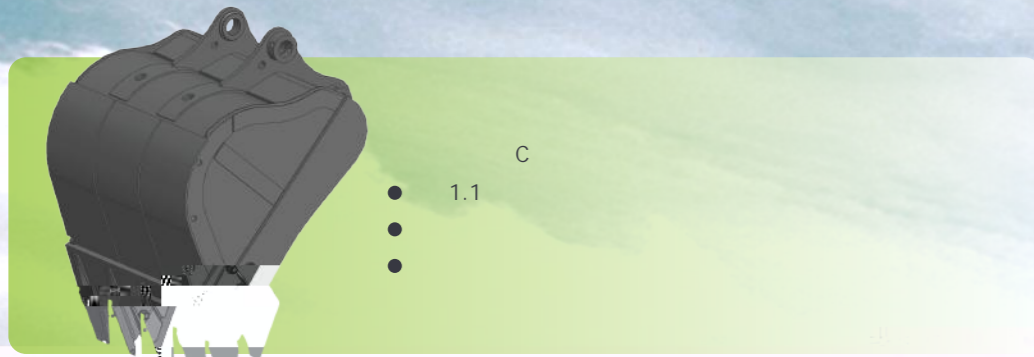
180



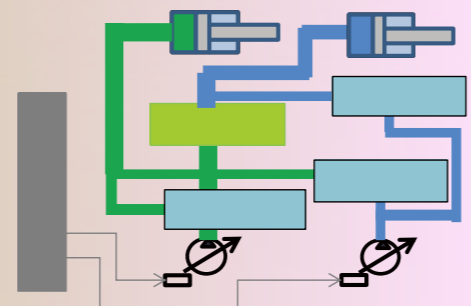
## *Large Machine Body*



# Excellent Capability



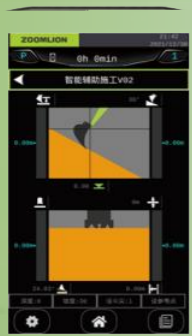
操控性



# Excellent Capability

2D / 3D  
40%

2D



3D



*Intelligent Manufacturing*



High Return on Investment



E

- 1 24
- 2
- 3

E

- 1
- 2
- 3 AI

E

- 1
- 2

E

- 1
- 2
- 3



# 五大亮点 登峰造G



mm

A	9650
B	2990
C	3150
D	2390
E	3470

mm

--	--

